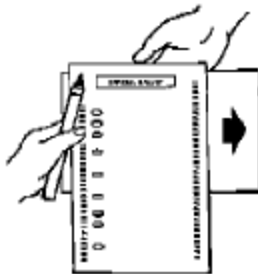




Voting is simple, secret and secure with the Optical Scan Paper Ballot System.

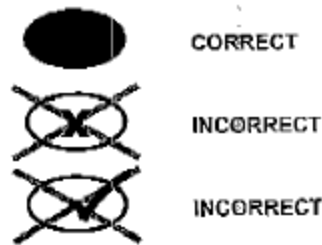
1. Check In

Receive ballot, marker, and secrecy sleeve from Poll Worker.



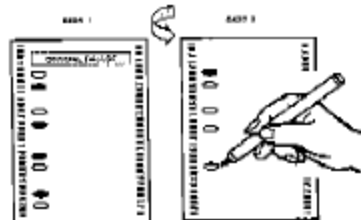
2. Vote

Completely fill in the ovals. **DO NOT** circle or mark ovals with an "X" or a "✓".



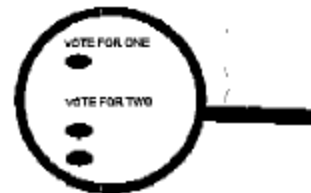
3. Complete Ballot

Vote both sides of the ballot.



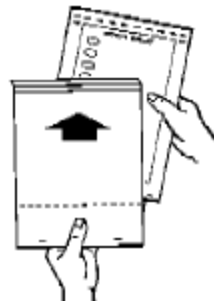
4. Review Ballot

Take time to check your ballot.



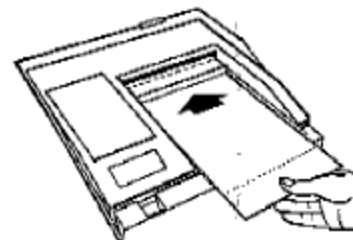
5. Keep It Secret

Place your completed ballot into the secrecy sleeve.



6. Cast Ballot

Feed your ballot into the scanner.



Poll Workers are available to help you if you have questions or need assistance. For more information please visit www.sdvote.com or call 858.565.5800.

CP 223500
BT 324
SEQ 0406

OFFICIAL BALLOT

POLLS

COUNTY OF SAN DIEGO
GENERAL ELECTION
Tuesday, November 2, 2004



VOTER INSTRUCTIONS: To vote on a candidate, completely darken the oval next to the candidate's name. To vote for a measure, completely darken the oval next to the word "YES" or "NO". To vote for a qualified write-in candidate, whose name is not printed on the ballot, write the person's name on the blank line at the end of the list of candidates for the contest and then completely darken the oval next to the written name. If you are not voting at a poll, use ballpoint pen with dark ink (not red). All distinguishing marks or erasures are forbidden and make the ballot void. If you tear, deface, or wrongly mark this ballot, return it and get another.

VOTE LIKE THIS: ●

VOTE BOTH SIDES OF THE BALLOT